

Aurora Lighting is home to an extensive range of modern lighting equipment that includes the latest automated and LED technologies, tungsten, distribution and control.

Listed below is a selection from our expanding, evolving product range. For a more detailed list please refer to our Gaffer List, alternatively, if you have a specific equipment requirement, please contact us.

Moving Light - Beams

Studio Due CS4 - Moving ACL Bar



SOURCE:	4x STI 250W 28V	POWER:	1100W / 4.8A~ @ 230V	WEIGHT:	33.5 Kg
BEAM:	4x ACL beam with individual dimmers	ACCESSORIES:	Stacking array frames, Upright floor bases		
CONTROL:	13/15/20 Channels 3 & 5 Pin XLR				

Clay Paky Sharpy



SOURCE:	Philips Platinum 5R 8000K	COLOUR:	Wheel 14x Colours + Open	WEIGHT:	21.5 Kg
OPTICS:	0° - 3.8° Zoom	CONTROL:	20 Channels, 3 & 5 Pin XLR		
BEAM:	17x Fixed Gobos + Open, 8 Facet Prism & Frost	POWER:	350W / 1.5A~ @ 230V		

Martin RUSH MH-3 Beam



SOURCE:	Philips Platinum 5R 8000K	COLOUR:	Wheel 14x Colours + Open	WEIGHT:	23 Kg
OPTICS:	0° - 3.8° Zoom	CONTROL:	20 Channels, 3 & 5 Pin XLR		
BEAM:	17x Fixed Gobos + Open, 8 Facet Prism & Frost	POWER:	350W / 1.5A~ @ 230V		

Novalight Nova Flower



SOURCE:	HTI 1200W 6000K	CONTROL:	14 Channels, 5 Pin XLR	WEIGHT:	90 Kg
OPTICS:	40° Fixed	POWER:	1450W / 6.3A~ @ 230V		
BEAM:	Rotating mirror reflector				
COLOUR:	Wheel 6x Colours + Open & CMY				

Novalight Super Nova Flower



SOURCE:	HTI 2000W	CONTROL:	15/18 Channels, 5 Pin XLR	WEIGHT:	67 Kg
OPTICS:	40° Fixed	POWER:	2200W / 9.5A~ @ 230V		
BEAM:	5 beam effects				
COLOUR:	Wheel 6x Colours + Open & CMY				

High End Showgun



SOURCE:	MSR 2000 6000K & RGB LED Ring	CONTROL:	30 Channels, 3 & 5 Pin XLR	WEIGHT:	66 Kg
OPTICS:	9° - 18° Zoom	POWER:	2800W / 11A~ @ 230V		
BEAM:	4x Fixed Gobos + Open & Frost				
COLOUR:	CMY Beam & RGB LED Ring				

Moving Light - Profile Spots

Martin Mac 250+ Spot



SOURCE:	MSD 250W 8500K	COLOUR:	Wheel 12x Colours + Open	WEIGHT:	24 Kg
OPTICS:	18° Fixed	CONTROL:	9/13 Channels, 3 Pin XLR		
BEAM:	8x Rotating Gobos + Open & 3 Facet Prism	POWER:	360W / 1.8A~ @ 230V		

Martin Mac 575 Krypton



SOURCE:	CSR 575W 7000K	COLOUR:	Wheel 1 8x Colours + Open & Wheel 2 8x Colours + Open	WEIGHT:	40.3 Kg
OPTICS:	16° - 31° Zoom	CONTROL:	19/25 Channels, 3 & 5 Pin XLR		
BEAM:	6x Rotating Gobo + Open, 9x Fixed Gobo + Open, 4 Facet Prism	POWER:	817W / 3.7A~ @ 230V		

Martin Viper Profile



SOURCE:	HTI 1000W 6000K	COLOUR:	Wheel 8x Colours + Open, Variable CTO & CMY	WEIGHT:	39.7 Kg
OPTICS:	10° - 44° Zoom	CONTROL:	26/34 Channels, 5 Pin XLR		
BEAM:	Wheel 1 5x Rotating Gobos + Open, Wheel 2 5x Rotating Gobos + Open, FX Wheel, 4 Facet Prism & Frost	POWER:	1186W / 5.2A~ @ 230V		

Martin Viper Performance



SOURCE:	HTI 1000W 6000K or HTI 1000W 3200K	COLOUR:	Wheel 7x Colours + Open, Variable CTO & CMY	WEIGHT:	40.4 Kg
OPTICS:	10° - 44° Zoom	CONTROL:	32/40 Channels, 5 Pin XLR		
BEAM:	Rotatable 4 Blade Framing Module, Wheel 1 5x Rotating Gobos + Open, Animation Wheel, 4 Facet Prism & Frost	POWER:	1186W / 5.2A~ @ 230V		

Vari-Lite VL3000 Spot



SOURCE:	HTI 1200W 6000K	COLOUR:	Wheel 6x Colours + Open & CMY	WEIGHT:	43.5 Kg
OPTICS:	10° - 60° Zoom	CONTROL:	20 Channels, 5 Pin XLR		
BEAM:	14x Rotating Gobos + Open Over 3 Wheels	POWER:	1848W / 8A~ @ 230V		

Moving Light - Wash Units
Studio Due NanoLED


SOURCE: 14x 3W CREE LED
OPTICS: 23° Fixed
COLOUR: RGB LED

CONTROL: 12 Channels, 3 Pin XLR
POWER: 60W / 0.2A~ @ 230V

WEIGHT: 6 Kg

Martin Mac 300


SOURCE: MSD 250W 8500K
OPTICS: 18° Fixed
BEAM: Frost
COLOUR: Wheel 6x Colours + Open & CMY

CONTROL: 9/13 Channels, 3 Pin XLR
POWER: 330W / 1.6A~ @ 230V

WEIGHT: 21.9 Kg

Vari-Lite VL500 80V


SOURCE: 80V 1200W Tungsten 3200K
OPTICS: Clear (VNSP) or Stipple (NSP) Lenses
COLOUR: CMY

CONTROL: 8/13 Channels, 5 Pin XLR
POWER: 1440W / 6.2A~ @ 230V

WEIGHT: 26 Kg

Vari-Lite VL2000 Wash


SOURCE: MSR 700 5600K
OPTICS: 12° - 57° Zoom
COLOUR: Wheel 11x Colours + Open & CMY

CONTROL: 10/12 Channels, 5 Pin XLR
POWER: 1056W / 4.6A~ @ 230V

WEIGHT: 26 Kg

Martin Mac Aura


SOURCE: LED
OPTICS: 11° - 58° Zoom
COLOUR: RGBW Beam / RGB 'Aura' Effect, Wheel 33x Virtual Colours + Open & CTB.

CONTROL: 14/25 Channels, 5 Pin XLR
POWER: 228W / 1.1A~ @ 230V

WEIGHT: 8 Kg

Martin Mac Quantum


SOURCE: LED
OPTICS: 11° - 53° Zoom
BEAM: Beam twister effect

COLOUR: RGBW, Wheel 36x Virtual Solid Colours + Open, Wheel 36x Virtual Ring Effects + Open & CTB
CONTROL: 14/33 Channels, 5 Pin XLR
POWER: 856W / 3.8A~ @ 230V

WEIGHT: 23.5 Kg
OPTIONS: Soft Lens

Vari-Lite VL3500 Wash


SOURCE: HTI 1500W 6000K
OPTICS: Variable lens options producing 9.5° - 54° Zoom
COLOUR: Wheel 1 5x Colours + Open, Wheel 2 5x Colours + Open, CTO Wheel & CMY

CONTROL: 19 Channels, 5 Pin XLR
POWER: 1850W / 8A~ @ 230V
OPTIONS: Clear, Stipple or Fresnel Front Lens Buxom or Fresnel Internal Lens

WEIGHT: 46 Kg

Control Consoles
HOG 4 Full Boar Console


DISPLAYS:	Dual 15.6" and 2x DVI	ON-BOARD MIDI:	Yes
FADERS:	10 Motorised + GM		
ON-BOARD DMX:	4 Universes		
ACN/ART-NET:	12 Universes		

HOG 4 Road Hog Console

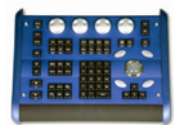

DISPLAYS:	Single 22" and 1x DVI	ON-BOARD MIDI:	Via USB adpater
FADERS:	10 Non-Motorised		
ON-BOARD DMX:	4 Universes		
ACN/ART-NET:	8 Universes		

HOG 3 Full Boar Console


DISPLAYS:	Dual 12" and 2x DVI	ON-BOARD MIDI:	Yes
FADERS:	10 Non-Motorised		
ON-BOARD DMX:	4 Universes		
ACN/ART-NET:	12 Universes		

HOG 3 Full Boar Playback Wing


DISPLAYS:	Single 12"
FADERS:	10 Non-Motorised
ON-BOARD DMX:	4 Universes via Internal Super Widget

HOG 3 Mini Programming Wing


CONNECTION:	USB with internal Hub
CONTROLS:	4 Encoders and Trackball
ON-BOARD DMX:	None

HOG 3 Mini Playback Wing


CONNECTION:	USB with internal Hub
FADERS:	10 Non-Motorised
ON-BOARD DMX:	None

LSC Minim 12/24


FADERS:	24 Non-Motorised + 2 Preset Masters + GM	ON-BOARD MIDI:	Yes
ON-BOARD DMX:	1 Universe	SCENES:	37
OUTPUTS:	24 Channels		

Avolites Pearl Tiger



DISPLAYS: Internal monochrome and external 8" VGA

FADERS: 10 Non-Motorised

ON-BOARD DMX: 4 Universes

ON-BOARD MIDI: Yes

Avolites Pearl Expert & Touch Wing



DISPLAYS: Internal monochrome and external VGA

FADERS: 20 Non-Motorised

ON-BOARD DMX: 4 Universes

ART-NET: 12 Universes

ON-BOARD MIDI: Yes

Pharos LPC-1 Controller Kit



DISPLAYS: Via web interface

CONTROL: Timeline based

TRIGGERS: Ethernet, RS232/485, Midi, D/A Contacts

ON-BOARD DMX: 1 Universe

NETWORK: Art-Net, sACN, KiNET and Pathport

ON-BOARD MIDI: Yes

MOUNTING: Supplied as kit inside custom Peli case

Control Accessories

DP8000 Kit



OUTPUTS: 16 Universes via HogNet

CONTAINS: 1x DP8000
1x DP8000 Expander
1x Luminex Gigaswitch
1x PDU

Luminex Gigaswitch 8



TYPE: Unmanaged Switch

PORT SPEED: 8x 10 / 100 / 1000 Mbps

CONNECTOR: Neutrik Ethercon

AUTO CROSSOVER: Yes

Hog 3 Super Widget



ON-BOARD DMX: 4 Universes

CONNECTION: USB

Hog 3 Midi Timecode Widget



INPUT: Balanced audio LTC input on XLR

STANDARDS: Film, EBU, NTSC & SMPTE

CONNECTION: USB

LED Lighting

Martin Stage Bar 54S



SOURCE:	54x Luxeon K2 LED	COLOUR:	RGBAW	WEIGHT:	8 Kg
OPTICS:	29° Fixed	CONTROL:	3-30 Channels, 5 Pin XLR		
BEAM:	Individual or grouped pixel control	POWER:	225W / 1.1A~ @ 230V		

Leader Light Stage Beam 6-06D W



SOURCE:	6x White 10W LED 6500K	CONTROL:	3-8 Channels, 5 Pin XLR	WEIGHT:	8 Kg
OPTICS:	120° Fixed	POWER:	55W / 0.2A~ @ 230V		
COLOUR:	Fixed White				

Martin RUSH Par 2 RGBW Zoom



SOURCE:	12x 10W RGBW LED	CONTROL:	5-9 Channels, 5 Pin XLR	WEIGHT:	5.5 Kg
OPTICS:	10° - 60° Zoom	POWER:	148W / 0.7A~ @ 230V		
COLOUR:	RGBW				

Studio Due ArchiLED 150



SOURCE:	48x 3W LED	CONTROL:	10 Channels, 5 Pin XLR	WEIGHT:	8.5 Kg
OPTICS:	23° Fixed	POWER:	90W / 0.4A~ @ 230V		
COLOUR:	RGBA				

GDS Liteware HO Wireless Uplighter



SOURCE:	80W LED	POWER:	6-12 hours run time on full battery	WEIGHT:	13.5 Kg
COLOUR:	RGB	OPTIONS:	Wireless Solutions W-DMX MicroTX Transmitter		
CONTROL:	Wireless DMX (W-DMX) 3 Channels or Preset Colours				

LED RGB Flexible Ribbon



SOURCE:	SMD LED	POWER:	70W Per Meter		
OPTICS:	120° Viewing Angle	ACCESSORIES:	4 Way DMX PSU Clips and various fixings		
COLOUR:	RGB				
CONTROL:	3 Channels				

Pulsar Chromabatten 300



SOURCE:	90x 3W LED	CONTROL:	6-46 Channels, 5 Pin XLR	WEIGHT:	21 Kg
OPTICS:	10x50° Fixed	POWER:	300W / 1.3A~ @ 230V		
COLOUR:	RGB				

Pulsar Chromastrip X3 300, 600, 1200mm



SOURCE: LED

OPTICS: 10x50° Fixed

COLOUR: RGB

CONTROL: 3 Channels, 5 Pin XLR

ACCESSORIES:
12 Way DMX PSU ChromaZone

WEIGHT: 21.5 Kg

Pulsar Chromastrip II 300, 600, 900 & 1200mm



SOURCE: LED

COLOUR: RGB

CONTROL: 3 Channels, 5 Pin XLR

WEIGHT: 1.2 Kg

ACCESSORIES:
12 Way DMX PSU ChromaZone

Pulsar Chromacan



SOURCE: 80x LED

COLOUR: RGB

CONTROL: 3 Channels, 5 Pin XLR

WEIGHT: 1.2 Kg

ACCESSORIES:
12 Way DMX PSU ChromaZone

Effects Lighting

SGM X-5 Strobe (White)



SOURCE: SMD LED White 5600K

OPTICS: 120° Fixed

BEAM: Single or three segment control

COLOUR: White

CONTROL: 1-7 Channels, 3 & 5 Pin XLR

POWER: 920W / 4A~ @ 230V

WEIGHT: 7.8 Kg

Hungaroflash Quasar Pro Strobe



SOURCE: XOP15 Special Xenon 6000K

OPTICS: Flood

BEAM: Barndoor control

CONTROL: 2 Channels, 5 Pin XLR

POWER: 6kW / 26A~ @ 230V (11.5s)
15kW / 65A~ @ 230V (3.5s)

WEIGHT: 4.5 Kg

Showtec Sunstrip Active DMX



SOURCE: 10x 50W GU10 Tungsten 3200K

OPTICS: 35° Fixed

BEAM: Individual cell control

CONTROL: 1-10 Channels, 3 Pin XLR

POWER: 550W / 2.4A~ @ 230V

WEIGHT: 7.9 Kg

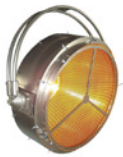
Tungsten Lighting

Mole Richardson Sky Pan 5kW (2kW)



SOURCE: 2kW Tungsten 3200K **WEIGHT:** 15 Kg
OPTICS: Flood
CONNECTOR: 32A Cee
POWER: 2000W / 8.7A~ @ 230V

James Thomas Patt 2013



SOURCE: HPL 750W 3200K **WEIGHT:** 13 Kg
OPTICS: BEAM
CONNECTOR: 16A
POWER: 750W / 3.2A~ @ 230V

6kW (4.8kW) Spacelight



SOURCE: 6x 800W P2/11 3200K **WEIGHT:** 16 Kg
OPTICS: Flood
CONNECTOR: SOCAPEX / TWIN 16A **ACCESSORIES:**
 15m Rigging Rope
POWER: 4800W / 20.8A~ @ 230V

ETC Source Four Zoom Profile



SOURCE: HPL 750W 3200K **WEIGHT:** 7.5 kg (25/50) / 9.5 Kg (15-30)
OPTICS: 15° - 30° or 25° - 50° Zoom
CONNECTOR: 16A
POWER: 750W / 3.2A~ @ 230V

ETC Source Four Jr Zoom Profile



SOURCE: HPL 575W 3200K **WEIGHT:** 4.5 Kg
OPTICS: 25° - 50° Zoom
CONNECTOR: 16A
POWER: 575W / 2.5A~ @ 230V

PAR 64



SOURCE: PAR 64 Various **OPTICS:** CP60 VN5P 1000W 3200K **STYLES:** Longnose Black 3Kg
 Bar of 6 L/N Black 25Kg
CONNECTOR: 16A CP61 NSP 1000W 3200K
 CP62 MFL 1000W 3200K Floorcan Black 2.5Kg
 CP88 MFL 500W 3200K Floorcan Silver 2.5Kg

PAR 56 Floorcan



SOURCE: PAR 56 300W 3200K **WEIGHT:** 2 Kg
OPTICS: WFL
CONNECTOR: 16A via LCP103 Jumper
POWER: 300W / 1.3A~ @ 230V

PAR 30



SOURCE: PAR 30 E27 100W
WEIGHT: 1 Kg
OPTICS: 30° Fixed
CONNECTOR: 16A
POWER: 100W / 0.4A~ @ 230V

PAR 16 Birdie



SOURCE: GU10 50W
WEIGHT: 0.5 Kg
CONNECTOR: 16A
POWER: 50W / 0.2A~ @ 230V

Mole Richardson Two Lite Molefay



SOURCE: 2x 650W FCX (DWE) 3200K
WEIGHT: 4.5 Kg
OPTICS: MFL
CONNECTOR: 16A
POWER: 1300W / 5.6A~ @ 230V

4 Lite Molefay / Blinder



SOURCE: 4x 650W DWE 3200K
WEIGHT: 10 Kg
OPTICS: MFL
CONNECTOR: 1x 16A
POWER: 2600W / 11.3A~ @ 230V

8 Lite Molefay / Blinder



SOURCE: 8x 650W DWE 3200K
WEIGHT: 14 Kg
OPTICS: MFL
CONNECTOR: 2x 16A
POWER: 5200W / 22.6A~ @ 230V

Thomas Batten 10 Cell & 20 Cell



SOURCE: GU10 230V
WEIGHT: 10 Kg (10 Cell) / 15 Kg (20 Cell)
OPTICS: AS PER LAMP
CONNECTOR: 1x 16A
POWER: AS PER LAMP

500W Fresnel



SOURCE: CP82 500W 3200K
WEIGHT: 2.5 Kg
OPTICS: 11° - 49°
ACCESSORIES: 4 Leaf Barndoor
CONNECTOR: 16A
POWER: 500W / 2.2A~ @ 230V

650W Fresnel



SOURCE: CP89 650W 3200K
OPTICS: 11° - 53°
CONNECTOR: 16A
POWER: 650W / 2.8A~ @ 230V

WEIGHT: 3 Kg
ACCESSORIES:
4 Leaf Barndoor

1kW Fresnel



SOURCE: CP40 1000W 3200K
OPTICS: 9° - 59°
CONNECTOR: 16A
POWER: 1000W / 4.3A~ @ 230V

WEIGHT: 6.5 Kg
OPERATION: POLE
ACCESSORIES:
4 Leaf Barndoor

2kW Fresnel



SOURCE: CP41 2000W 3200K
OPTICS: 8° - 45°
CONNECTOR: 16A
POWER: 2000W / 8.6A~ @ 230V

WEIGHT: 14.5 Kg
OPERATION: POLE or MANUAL
ACCESSORIES:
4 Leaf Barndoor

5kW Fresnel



SOURCE: CP29 5000W 3200K
OPTICS: 12° - 56°
CONNECTOR: 16A
POWER: 5000W / 21.7A~ @ 230V

WEIGHT: 18 Kg
OPERATION: POLE
ACCESSORIES:
4 Leaf Barndoor

3 Way Readhead Kit



SOURCE: DXX 800W R7s 3200K
OPTICS: 30° - 60°
CONNECTOR: 16A
POWER: 800W / 3.4A~ @ 230V

WEIGHT: 1.6 Kg / Each
CONTAINS: 3x Readhead Units
3x Ultra Lightweight Stands

3 Way Dedolight DLH4 Kit



SOURCE: A1/215 100W 12V 3200K
OPTICS: 4.5° - 48°
CONNECTOR: 13A
POWER: 110W / 0.5A~ @ 230V / Each

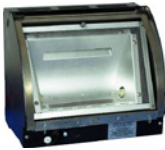
CONTAINS: 3x DLH4 Units
3x Ultra Lightweight Stands
3x In-line Dimmer

Strand Iris 1 Cyc Flood



SOURCE: P2/12 1200W or P2/10 625W 3200K **POWER:** 1200W / 5.2A~ @ 230V
625W / 2.7A~ @ 230V
OPTICS: FLOOD **OPERATION:** POLE
CONNECTOR: 16A **WEIGHT:** 9 Kg

Strand Orion Single Groundgrow Flood



SOURCE: P2/12 1200W or P2/10 625W 3200K **POWER:** 1200W / 5.2A~ @ 230V
625W / 2.7A~ @ 230V
OPTICS: FLOOD **WEIGHT:** 5 Kg
CONNECTOR: 16A

DeSisti Giotto 3 Cell Cyc Flood



SOURCE: P2/12 1200W or P2/10 625W 3200K **POWER:** 3600W / 15.7A~ @ 230V
625W / 8.2A~ @ 230V
OPTICS: FLOOD **WEIGHT:** 16.2 Kg
CONNECTOR: 3x 16A **OPERATION:** POLE

2.5kW Tungsten Softlight



SOURCE: P2/12 1200W or P2/10 625W 3200K **POWER:** 12000W / 5.2A~ @ 230V
625W / 2.7A~ @ 230V
OPTICS: FLOOD **WEIGHT:** 13 Kg
CONNECTOR: 16A **OPERATION:** POLE

Squirrel Cage Pendant



SOURCE: ST64 60W GLS **WEIGHT:** 1 Kg
CONNECTOR: 16A
POWER: 60W / 0.2A~ @ 230V

Daylight/Fluorescent

1.2kW HMI Fresnel



SOURCE: HMI 1200W SE 5600K
OPTICS: 5° - 52°
CONNECTOR: 16A
POWER: 1200W / 5.2A~ @ 230V

OPERATION: MANUAL
ACCESSORIES: 4 Leaf Barndoor
WEIGHT: 12 Kg

2.5kW / 4kW HMI PAR



SOURCE: HMI 2.5kW/4kW SE 5600K
OPTICS: Spot, MFL, WFL, Super WF and Frosted Super Lenses
CONNECTOR: 16A

POWER: 2500W / 10.8A~ @ 230V
 4000W / 17.4A~ @ 230V
OPERATION: MANUAL

WEIGHT: 23 Kg
ACCESSORIES: 4 Leaf Barndoor

Kino Flo Image 80



SOURCE: F40T12 T12 40W 6500K
BEAM: Group or Individual Lamp Control via DMX
CONTROL: 1-8 Channels, 5 Pin XLR

POWER: 989W / 4.3A~ @ 230V
WEIGHT: 18 Kg

Encapsulite HFI T8 Stick Light 5'



SOURCE: 58W T8 TUBE 4000K
CONNECTOR: 16A via Figure 8
POWER: 58W / 0.3A~ @ 230V

WEIGHT: 1.5 Kg

Kino Flo Kamio Ring Light Kit



SOURCE: FC20/T5 20W KF32 3200K
CONNECTOR: 16A
POWER: 12V = 30W / 2.5A
 15V = 30W / 2.5A
 24V = 31W / 1.3A

CONTAINS: 1x Ring Light
 1x Portable Ballast
 1x 230v Power Supply

Exterior Lighting

PAR 16 Birdie



SOURCE: GU10 50W
CONNECTOR: 16A
IP RATING: IP54
POWER: 50W / 0.2A~ @ 230V

WEIGHT: 1 Kg

60W GLS Bulkhead



SOURCE: 60W GLS
CONNECTOR: 16A
IP RATING: IP65
POWER: 60W / 0.26A~ @ 230V

WEIGHT: 1 Kg

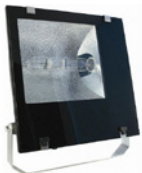
150W HQI / MBI Flood



SOURCE: 150W RX7s DE HQI
CONNECTOR: 16A
IP RATING: IP65
POWER: 150W / 0.65A~ @ 230V

WEIGHT: 6 Kg

400W HQI / MBI Flood



SOURCE: 400W E40 SE HQI
CONNECTOR: 16A
IP RATING: IP65
POWER: 60W / 0.26A~ @ 230V

WEIGHT: 11 Kg

Atlas / Sun Floods



SOURCE: Linear Tungsten
CONNECTOR: 16A
IP RATING: IP65

OPTIONS: 150W (120W) / 0.5A~ @ 230V
500W (400W) / 1.7A~ @ 230V
1000W / 4.3A~ @ 230V

Weatherproof Twin Fluorescent



SOURCE: 2 x 58W T8 TUBE
CONNECTOR: 16A
IP RATING: IP65
POWER: 116W / 0.5A~ @ 230V

WEIGHT: 5 Kg

Festoon



SOURCE: GLS BC
CONNECTOR: 16A
IP RATING: IP44

OPTIONS: 5m/10 Lamps 500mm Spacing
10m/20 Lamps 500mm Spacing
15m/30 Lamps 500mm Spacing
20m/40 Lamps 500mm Spacing

Dimming

2.3kW Single Location Dimmer



INPUT: 16A Ceeform
OUTPUT: 16A Ceeform
RATING: 10A
PROTECTION: MCB

DMX: Yes
CONTROLS: Rotary Level Fader

6 x 2.5kW Dimmer Rack



INPUT: 63A 1Ø Ceeform
OUTPUT: Socapex
RATING: 13A per channel
PROTECTION: MCB

DMX: Yes

3 x 5kW Dimmer Rack



INPUT: 63A 1Ø Ceeform
OUTPUT: 3 x 32A Ceeform
RATING: 25A per channel
PROTECTION: MCB

DMX: Yes

48 Way 3kW Touring Dimmer Rack



INPUT: 400A Powerlock & Loop Out
OUTPUT: 16 x Socapex
HARD PATCH: Yes
RATING: 12A per channel

PROTECTION: RCBO per Channel
DMX: Yes

Avolites ART2000 T2 48 Way Touring Dimmer Rack



INPUT: 400A Powerlock & Loop Out
OUTPUT: 20 x Socapex
HARD PATCH: Yes
RATING: 16A per channel

PROTECTION: RCD per Module
DMX: Yes